

# MEDLINK

## Complete Podiatry Solution



Specifications subject to change without notice  
System does not include Monoblock and other items as shown in image

# MEDLINK IMAGING

a **viewworks** company

# Available Panel Options



**VIVIX-S 2530VW**  
Wireless CSI Panel



**VIVIX-S 3643VW**  
Wireless CSI Panel

Specifications subject to change without notice

## Medlink Workstation

Our workstations are quality tested for reliability and offer a seamless “plug and play” experience with any panel purchased. It features a powerful i7 CPU, 16GB of RAM, a 256GB SSD for rapid access, and a 1TB RAID1 drive for secure data storage. Equipped with a 24-inch touch screen monitor, this efficient workstation is ideal for medical environments that require precision and ease of use.



# Mobile DR Panel Holder

The **Mobile DR Panel Holder** is a lightweight case that features a single ergonomic handle on the long axis providing a sure grip with a bidirectional Twin-Lock™ that secures the DR panel quickly and effectively. The encasement is easy to clean as it is milled from a single piece of HDPE, and protects the DR panel from any incidental damage that may occur during free exposure exams.

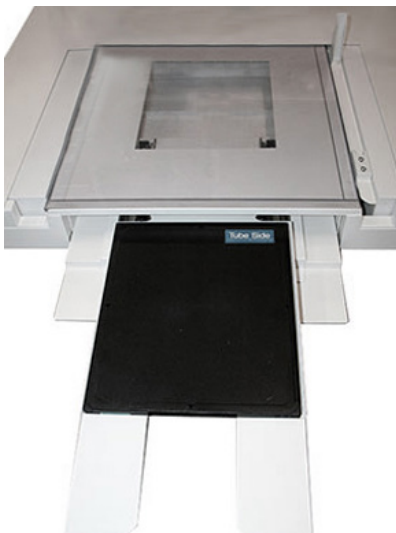
## Key Features

- ✓ Designed and engineered for precise fitment of any ANSI standard cassette size panel
- ✓ Single handle on the long axis allows for a variety of exams and a sure grip on expensive DR panels
- ✓ Made from resilient, shock absorbent HDPE featuring radius edges for deflection and extra drop protection
- ✓ Lightweight, robust uni-frame design made from a single piece of HDPE
- ✓ Simple bi-directional Twin-Lock eliminates accidental release of the panel from the holder
- ✓ Smooth, non-porous surface allows for effective cleaning and superior infection control
- ✓ Curved corners and radius edges don't catch on bedsheets for easy placement in the mobile imaging environment
- ✓ Air-Ride corners and shock absorbent milled handles for additional drop protection



# Orthoposure

The **BDXC** is the perfect unit for the podiatrist that is using film or CR and is expecting to go into DR in the near future. This unit accommodates film and CR options; when you are ready to transition to DR systems, the tray is removed and you are ready for the transition to DR panels.

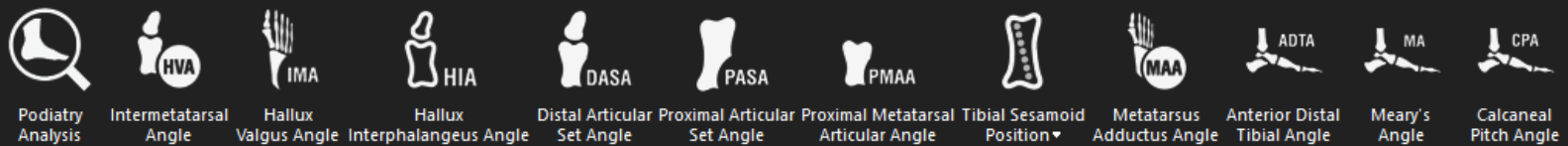
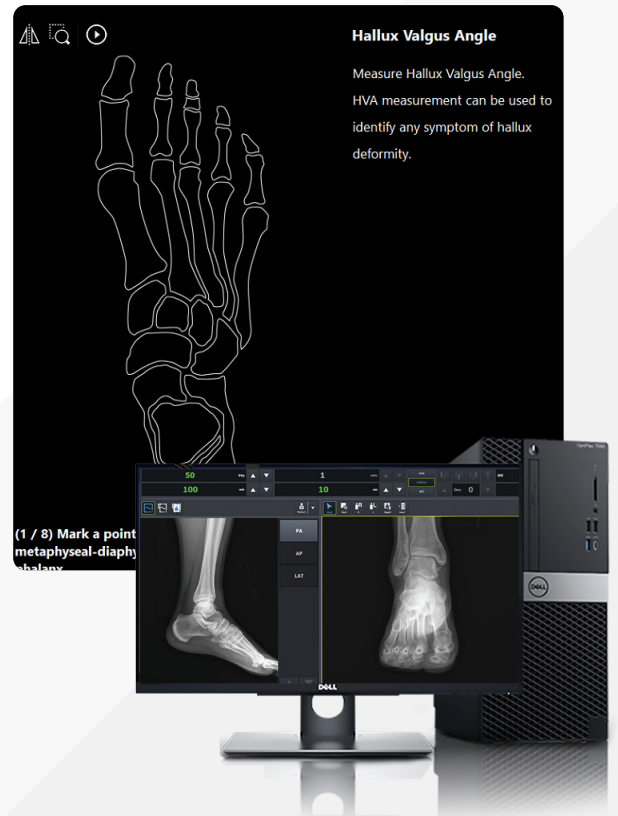


# VXvue with PureImpact™

Digital Radiography Acquisition Software for VIVIX-S Series

## Key Features

- ✓ Patient Registration
- ✓ Exclusive Radiography Viewer
- ✓ Advanced Image Processing with PureImpact™
- ✓ Better Usability
- ✓ Touch Interface for Tablet / Touch Screen Monitors
- ✓ Easy Customization
- ✓ Optimized for Various Applications

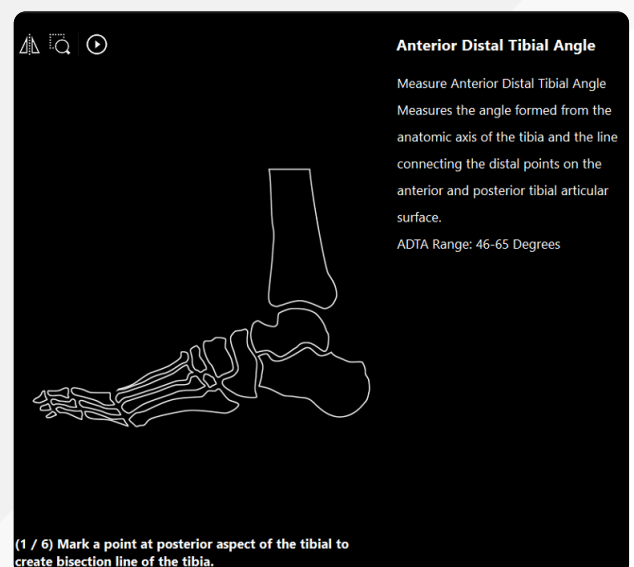


# QXLink 3.3

Powerful and Intuitive Mini PACS Software

QXLink 3.3 is a mini PACS that allows users to access diagnostic images stored on the server.

DICOM 3.0 Compatibility  
VXvue (Viewworks' viewer) Compatibility



**MEDLINK** I M A G I N G

---

a viewworks company